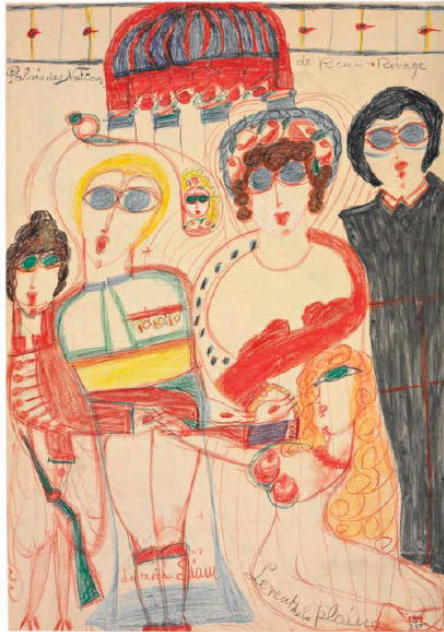


ART BRUT IN THE IMPERIAL CORRIDOR

With a setting of former imperial guest rooms, *art brut* in the Imperial Corridor, curated by Hans Hoffer, the president of GLOBART, utilises the form and surroundings of imperial institutions as a means to emphasise *art brut*. The work displayed within the colonial corridors of the Imperial Corridor contains a specific focus on art created within Gugging from the 24 artists within the exhibition. The Hannah Rieger collection, mirrors this focus of traditions within Gugging, while the collection is internationally oriented, it retains a constant value of supporting and platforming artists in Gugging, having grown since its inception in 1991, with roughly 550 works of art it is noted to be the largest specialised *art brut* collection in Austria.



Aloise Corbaz, *General Guisan Sous le Bouquet Final*, recto (part of a two-piece) between 1951-1960, coloured pencils on paper, 23.4 x 16.5 in. / 59.5 x 42 cm, courtesy of L'Association Aloise



Johann Hauser, *Woman with Black Hair*, 1995, pencil, coloured pencils on paper, 16.5 x 11.7 in. / 42 x 29.6 cm, courtesy of Private Foundation

One of the standout pieces in the exhibition is 'Kaiser Franz Joseph Von Österreich' (Emperor Francis Joseph of Austria) by Josef Wittlich (1903-1982) from the mid-70s. Working as an unskilled labourer in a family-owned business which made industrial ceramic, Wittlich painted vivid scenes of battles, women and celebrities, using pictures from magazines or mail-order catalogues as references. The bright colours and line work are iconic in their own right, Wittlich's work is evocative of pop art, yet deeply personal to his style and aesthetic.



Josef Wittlich, *Emperor Franz Joseph of Austria*, mid-1970s, tempera on paper, 24.5 x 17.7 in. / 62.2 x 44.9 cm, courtesy of Josef Wittlich, Galerie Lange, photo: Maurizio Maier

June 25 - September 1, 2025

Imperial Corridor/ Melk Abbey, Abt-Berthold-Dietmayr-Straße, 3390 Melk
[/www.livingartbrut.com](http://www.livingartbrut.com)